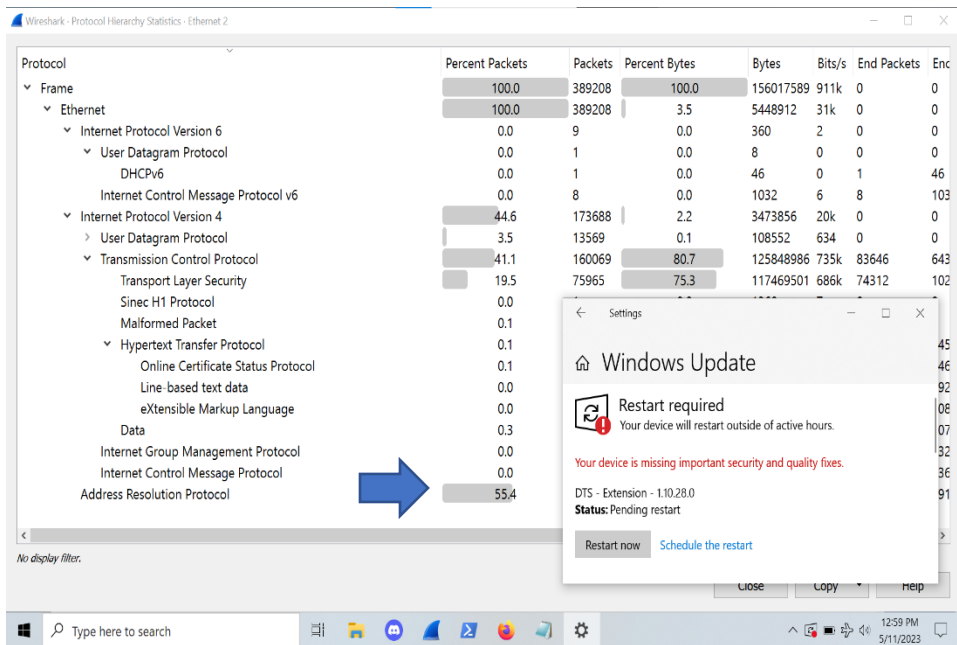
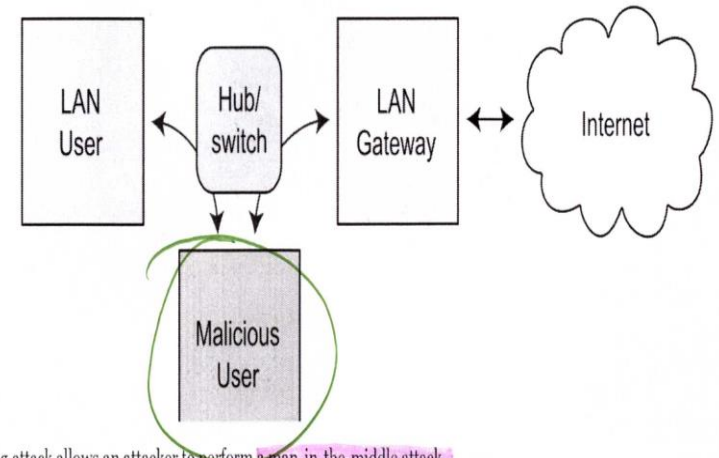


CONNECTED TO AN UNKNOWN NETWORK



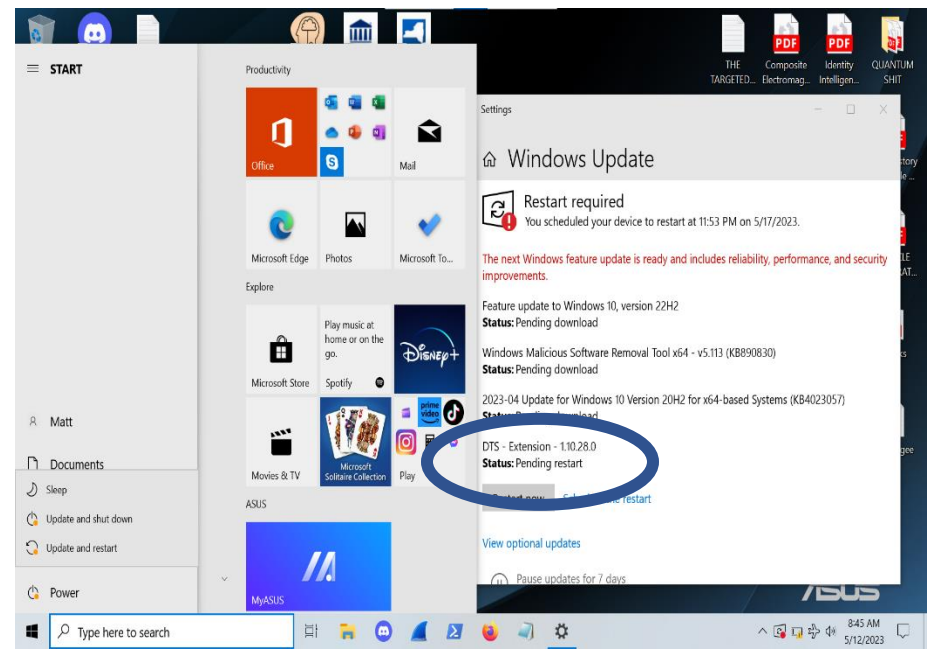
CONNECTIONS CAN GET BLOCKED OR REDIRECTED

Routing subject to ARP cache poisoning



A successful ARP spoofing attack allows an attacker to perform a man-in-the-middle attack.

UNKNOWN NETWORK = MAN IN THE MIDDLE



MALWARE CAN BE DOWNLOADED AS WINDOWS UPDATES